



# Model 1000

## RTU (Remote Terminal Unit)



Cordell's Model 1000 RTU offers the latest in flexible, intelligent monitoring for contact points (12), an analog input, comprehensive IP management and access capabilities to sites. The Model 1000 furnishes the capability to cost effectively manage your remote sites with multiple serial and Ethernet ports. In addition, it has the capability to function as a sub-net (managed switch), eliminating the additional cost of connectivity for other equipment at remote sites.

The Model 1000's ability to provide site alarm monitoring and I/O capacity to passive equipment makes it an intelligent extension of the Cordell's C5 Network Management System®. Cordell's RTU family is designed to enhance your network management strategy, reduce costs, and improve operational efficiency.

The Model provides a small footprint and with the input and output connections conveniently located on the front panel, it ensures a simple and efficient installation process. All connectors are removable for easy maintenance. The Model 1000 is powered by a DC input (24vDC or 48vDC), and there is a direct battery backup connection (24vDC) available.

### Model 1000 Features:

- 12 Inputs
- 1 Control Output
- Monitor Input up to 60vDC
- 2 Ethernet Ports
- 2 Async Ports
- Analog Input
- 24 Volt Battery Backup
- **Storage:**
  - Measurement Data up to 7 Days
  - Last 100 Alarms
- **Options:**
  - Temperature Sensors in Series
  - Wall or Cabinet Mounting
- **Future:**
  - 1U Rack Mount
  - A & B Power
  - Alarm Light
  - 2 Output Contacts
- **Secure Connections:**
  - SNMPv2 and v3
  - SSHv2/SFTP/HTTPS
- **Larger Device:**
  - More Points
  - Serial Points
  - Ethernet Ports



# Model 1000

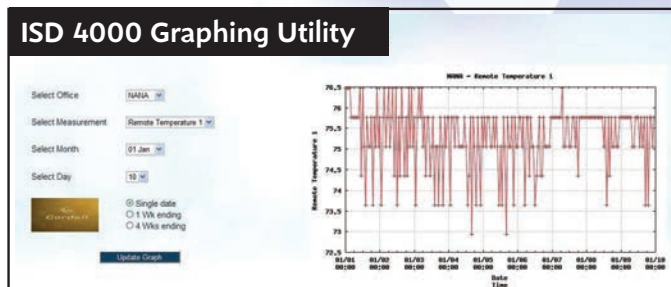
## RTU (cont.)

Because of the Model 1000's small size, it can be installed in nearly any cabinet, tower, or cell site enclosure. This "intelligent enclosure" can then provide critical data, including temperature, humidity, and DC power quality. This continuous monitoring helps protect equipment and ensure availability.

An integral part of the Cordell's suite of products, the Model 1000 connects to multiple network elements via a wide variety of interface options. It can perform interface conversion, collect alarms and performance data, provides advanced equipment management, and supports bi-directional management control through an Ethernet or backhaul connection. Together, Cordell's family of RTU's, ISD4000 Element Manager and C5 Network Management Solution provide a complete solution your for network reliability.

### Graphing Software with Monitoring

Ability to collect temperature and power values



## Model 1000 Specs:

- **Model 1000 management and management access**
  - Command Line Interface (CLI)
  - Web-based user interface administration
  - Console port local access via Ethernet
  - SSHv2 / SFTP / HTTPS
  - SNMP MIB
  - SMS
- **Reliability/maintenance**
  - MTBF - 200,000 hours @ 25°C
  - MTTR - 30 minutes
- **Power and battery backup**
  - +/- 20 to 60 VDC power input
  - Separate battery backup connection with internal charger
- **Remote RMC-700 physical specifications**
  - Depth: 0.92 in. (2.3 cm)
  - Height: 5.6 in. (14.2 cm)
  - Width: 9.95 in. (25.3 cm)
  - Weight: 1.6 lb (0.73 kg)
  - Mounting: Wall or cabinet
  - Power requirements: 5W (minimum); 12W (maximum)
  - Input voltage: +/- 20 VDC to +/- 60 VDC
- **Environmental**
  - Extended temperature range of -40°C to +65°C (-40°F to 149°F)
  - Humidity – 0% to 95% (non-condensing)